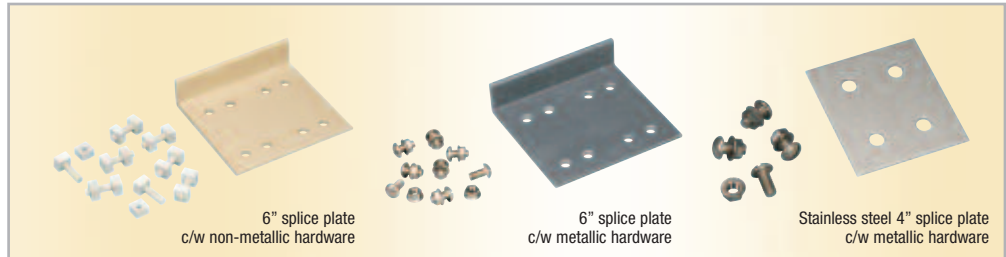




## NON-METALLIC CABLE TRAY & STRUT SYSTEMS

# ACCESSORIES



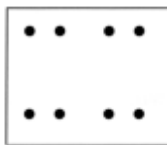
### SPLICE PLATE SELECTION GUIDE

| NM - X                                   | SS                      | 4                                                                                               | 00                                   | 4                                                                                                                                                                                                                 | ( )                                   | SS6                                           |                                                                                                      |
|------------------------------------------|-------------------------|-------------------------------------------------------------------------------------------------|--------------------------------------|-------------------------------------------------------------------------------------------------------------------------------------------------------------------------------------------------------------------|---------------------------------------|-----------------------------------------------|------------------------------------------------------------------------------------------------------|
| <b>CABLE TRAY SYSTEM</b><br>Non-metallic | <b>ACCESSORY NUMBER</b> | <b>MATERIAL</b><br>SS - Stainless Steel<br>FRP - Fiberglass<br>P - Polyester<br>V - Vinyl Ester | <b># OF HOLES IN PLATE</b><br>4<br>8 | <b>TYPE/ANGLE</b><br>00 - Straight<br>01 - Slotted Straight<br>02 - Vertical Adjustable<br>03 - Horizontal Adjustable<br>04 - Step Down<br>05 - Tray to Box<br>30 - 30° Angle<br>45 - 45° Angle<br>90 - 90° Angle | <b>TRAY SERI ES</b><br>3"<br>4"<br>6" | <b>TYPE</b><br>V - Vertical<br>H - Horizontal | <b>HARDWARE</b><br>SS6 - 316 Stainless Steel<br>MO - Monel<br>SB - Silicon Bronze<br>FR - Fiberglass |

**Example:** NM-XSS4004SS6, Stainless steel 316, 4 holes supplied with stainless steel 316 hardware for a 4" deep straight section.

**Note:** Splice plates shown on pages 51-53 represent splices for 6" side rail height. Number of holes may vary with other side rail heights.

#### STANDARD SPLICE PLATES

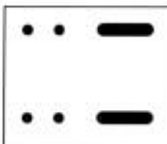


**Quantity required supplied with each tray section.**  
Order only pairs of splice plates needed for field modifications.  
SS6 hardware supplied as standard - use SS6 suffix.  
Other hardware available, specify by hardware suffix.  
Hardware other than SS6 is considered special.

| Material               | Height | Catalog No.         |
|------------------------|--------|---------------------|
| <b>Stainless Steel</b> | 6"     | <b>NM-XSS-8006*</b> |
|                        | 4"     | <b>NM-XSS-4004*</b> |
|                        | 3"     | <b>NM-XSS-4003*</b> |

\* Hardware suffix needed to complete part number

#### EXPANSION SPLICE PLATE



These plates allow for up to 1" expansion or contraction of tray system.  
For correct gap setting procedure, see page 10.

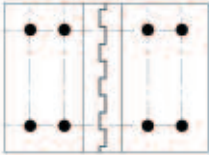
| Material                              | Side Rail Height | Catalog No.         |
|---------------------------------------|------------------|---------------------|
| <b>Stainless Steel 316 (16 gauge)</b> | 6"               | <b>NM-XSS-8016*</b> |
|                                       | 4"               | <b>NM-XSS-4014*</b> |
|                                       | 3"               | <b>NM-XSS-4013*</b> |

\* Hardware suffix needed to complete part number

All splice plate hardware is 3/8".



**HORIZONTAL ADJUSTABLE SPLICE PLATES**

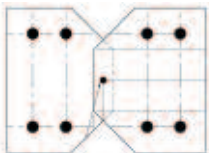


These plates provide for changes in the horizontal direction that do not conform to standard fittings. Furnished in pairs

| Material                              | Side Rail Height | Catalog No.         |
|---------------------------------------|------------------|---------------------|
| <b>Stainless Steel 316 (16 gauge)</b> | 6"               | <b>NM-XSS-8036*</b> |
|                                       | 4"               | <b>NM-XSS-4034*</b> |
|                                       | 3"               | <b>NM-XSS-4033*</b> |

\* Hardware suffix needed to complete part number

**VERTICAL ADJUSTABLE SPLICE PLATES**

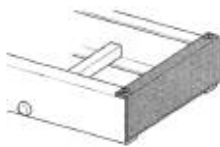


These plates provide for changes in elevation that do not conform to standard vertical fittings. Furnished in pairs

| Material                              | Side Rail Height | Catalog No.         |
|---------------------------------------|------------------|---------------------|
| <b>Stainless Steel 316 (16 gauge)</b> | 6"               | <b>NM-XSS-8026*</b> |
|                                       | 4"               | <b>NM-XSS-4024*</b> |
|                                       | 3"               | <b>NM-XSS-4023*</b> |

\* Hardware suffix needed to complete part number

**BLIND END PLATE**



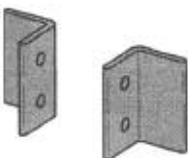
This plate forms a closure for any tray that dead ends. Furnished as one plate.

| Material                       | Height | Catalog No.           |
|--------------------------------|--------|-----------------------|
| <b>Polyester or Vinylester</b> | 6"     | <b>NM-XBE*1086W**</b> |
|                                | 4"     | <b>NM-XBE*1084W**</b> |
|                                | 3"     | <b>NM-XBE*1083W**</b> |

\* Material suffix: P=Polyester, V= Vinylester

\*\* Hardware suffix needed to complete part number  
W = tray width

**TRAY TO BOX SPLICE PLATES**



These plates are used to attach the end of a tray run to a distribution box or control center. Furnished in pairs

| Material               | Height | Catalog No.        |
|------------------------|--------|--------------------|
| <b>Stainless Steel</b> | 6"     | <b>NM-XSS8056*</b> |
|                        | 4"     | <b>NM-XSS4054*</b> |
|                        | 3"     | <b>NM-XSS4053*</b> |

\* Hardware suffix needed to complete part number

**STEP DOWN PLATES**



These splice plates provide for changes in side rail heights. Furnished in pairs.

| Material                              | Height   | Catalog No.         |
|---------------------------------------|----------|---------------------|
| <b>Stainless Steel 316 (16 gauge)</b> | 6" to 3" | <b>NM-XSS-8063*</b> |
|                                       | 6" to 4" | <b>NM-XSS-8064*</b> |
|                                       | 4" to 3" | <b>NM-XSS-4043*</b> |

\* Hardware suffix needed to complete part number

All splice plate hardware is 3/8". Splice plates shown represent splices for 6" side rail height. Number of holes may vary with other side rail heights.



**NON-METALLIC CABLE TRAY & STRUT SYSTEMS**

**ACCESSORIES**

**VERTICAL SPLICE PLATES**

**90°**



These splice plates provide for changes in elevation. Furnished in pairs.

| Material                              | Side Rail Height | Catalog No.          |
|---------------------------------------|------------------|----------------------|
| <b>Stainless Steel 316 (16 gauge)</b> | 6"               | <b>NM-XSS-8906V*</b> |
|                                       | 4"               | <b>NM-XSS-4904V*</b> |
|                                       | 3"               | <b>NM-XSS-4903V*</b> |

\* Hardware suffix needed to complete part number

**45°**



These splice plates provide for changes in elevation. Furnished in pairs.

| Material                              | Side Rail Height | Catalog No.          |
|---------------------------------------|------------------|----------------------|
| <b>Stainless Steel 316 (16 gauge)</b> | 6"               | <b>NM-XSS-8456V*</b> |
|                                       | 4"               | <b>NM-XSS-4454V*</b> |
|                                       | 3"               | <b>NM-XSS-4453V*</b> |

\* Hardware suffix needed to complete part number

**30°**



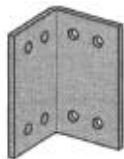
These splice plates provide for changes in elevation. Furnished in pairs.

| Material                              | Side Rail Height | Catalog No.          |
|---------------------------------------|------------------|----------------------|
| <b>Stainless Steel 316 (16 gauge)</b> | 6"               | <b>NM-XSS-8306V*</b> |
|                                       | 4"               | <b>NM-XSS-4304V*</b> |
|                                       | 3"               | <b>NM-XSS-4303V*</b> |

\* Hardware suffix needed to complete part number

**HORIZONTAL SPLICE PLATES**

**90°**



These splice plates provide for changes in the horizontal direction. Furnished in pairs.

| Material                              | Side Rail Height | Catalog No.          |
|---------------------------------------|------------------|----------------------|
| <b>Stainless Steel 316 (16 gauge)</b> | 6"               | <b>NM-XSS-8906H*</b> |
|                                       | 4"               | <b>NM-XSS-4904H*</b> |
|                                       | 3"               | <b>NM-XSS-4903H*</b> |

\* Hardware suffix needed to complete part number

**45°**



These splice plates provide for changes in the horizontal direction. Furnished in pairs.

| Material                              | Side Rail Height | Catalog No.          |
|---------------------------------------|------------------|----------------------|
| <b>Stainless Steel 316 (16 gauge)</b> | 6"               | <b>NM-XSS-8456H*</b> |
|                                       | 4"               | <b>NM-XSS-4454H*</b> |
|                                       | 3"               | <b>NM-XSS-4453H*</b> |

\* Hardware suffix needed to complete part number

**30°**



These splice plates provide for changes in the horizontal direction. Furnished in pairs.

| Material                              | Side Rail Height | Catalog No.          |
|---------------------------------------|------------------|----------------------|
| <b>Stainless Steel 316 (16 gauge)</b> | 6"               | <b>NM-XSS-8306H*</b> |
|                                       | 4"               | <b>NM-XSS-4304H*</b> |
|                                       | 3"               | <b>NM-XSS-4303H*</b> |

\* Hardware suffix needed to complete part number

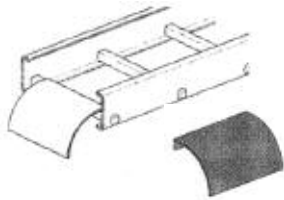
All splice plate hardware is 3/8". Splice plates shown represent splices for 6" side rail height. Number of holes may vary with other side rail heights.



## NON-METALLIC CABLE TRAY & STRUT SYSTEMS

# ACCESSORIES

### LADDER DROP-OUT



Specially-designed Ladder Drop-Outs provide a rounded surface with adequate radius to protect cable as it exists from the tray, preventing damage to insulation.

| Material               | Height    | Catalog No.         |
|------------------------|-----------|---------------------|
| <b>Polyester Resin</b> | 6" to 36" | <b>NM-XF-1104-W</b> |

Supplied with a 4" radius.  
W = tray width

### BARRIERS



Furnished with #10 x 3/4 self-tapping stainless steel screws

| Material                 | Side Rail Height | Catalog No.         |
|--------------------------|------------------|---------------------|
| <b>Polyester Resin</b>   | 6"               | <b>NM-BS06P-120</b> |
|                          | 4"               | <b>NM-BS04P-120</b> |
|                          | 3"               | <b>NM-BS03P-120</b> |
| <b>Vinyl Ester Resin</b> | 6"               | <b>NM-BS06V-120</b> |
|                          | 4"               | <b>NM-BS04V-120</b> |
|                          | 3"               | <b>NM-BS03V-120</b> |

### FLEXIBLE HORIZONTAL BARRIER KIT



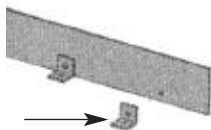
One Kit allows up to 38" radius position of the barrier. For larger than 38" radius barrier position, two kits are required.

#### Kit Contents

- 1 pc - 72" Straight Barrier
- 4 pc - XF-9002 Barrier Strip Clip
- 8 pc - Thermoplastic Drive Rivet
- 4 Pc - #10 x 3/4" Stainless Steel Self-Tapping Screw
- Assembly required - directions included.

| Material                 | Side Rail Height | Loading Depth 'H' | Catalog No.            |
|--------------------------|------------------|-------------------|------------------------|
| <b>Polyester Resin</b>   | 6"               | 4-11/16           | <b>NM-BS06P-90HBFL</b> |
|                          | 4"               | 2-11/16           | <b>NM-BS04P-90HBFL</b> |
|                          | 3"               | 1-3/4             | <b>NM-BS03P-90HBFL</b> |
| <b>Vinyl Ester Resin</b> | 6"               | 4-11/16           | <b>NM-BS06V-90HBFL</b> |
|                          | 4"               | 2-11/16           | <b>NM-BS04V-90HBFL</b> |
|                          | 3"               | 1-3/4             | <b>NM-BS03V-90HBFL</b> |

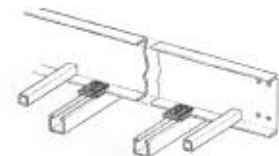
### BARRIER MOUNTING ANGLE CLIPS WITH FASTENERS



- 1 pack contains
- 4 angle clips and fasteners.
  - 2 thermoplastic drive rivets
  - 1 #10 x 3/4" Stainless steel self-tapping screw.

| Material               | Catalog No.      |
|------------------------|------------------|
| <b>Polyester Resin</b> | <b>NM-PK-BAC</b> |

### CLAMP/GUIDE



Combination hold down clamp and guide. Designed for 3/8" hardware - not included  
Furnished in pairs.

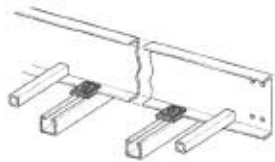
| Material               | Catalog No.        |
|------------------------|--------------------|
| <b>Polyester Resin</b> | <b>NM-XFP-1208</b> |



**NON-METALLIC CABLE TRAY & STRUT SYSTEMS**

ACCESSORIES

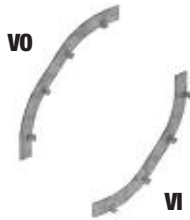
**CLAMP/GUIDE - SS6**



Combination hold down clamp and guide.  
Designed for 1/2" hardware - not included.

| Material                   | Catalog No.        |
|----------------------------|--------------------|
| <b>Stainless Steel 316</b> | <b>NM-XSS-1205</b> |

**VERTICAL BARRIERS**



Barriers for vertical fitting.  
Please add angle (X) and radius (†)  
to catalog number.  
Furnished with #10 X 3/4 self-tapping  
stainless steel screws.

| Material                 | Side Rail Height | Catalog No.                |
|--------------------------|------------------|----------------------------|
| <b>Polyester Resin</b>   | 6"               | <b>NM-BS06P(X)VI/VO(†)</b> |
|                          | 4"               | <b>NM-BS06P(X)VI/VO(†)</b> |
|                          | 3"               | <b>NM-BS06P(X)VI/VO(†)</b> |
| <b>Vinyl Ester Resin</b> | 6"               | <b>NM-BS06V(X)VI/VO(†)</b> |
|                          | 4"               | <b>NM-BS06V(X)VI/VO(†)</b> |
|                          | 3"               | <b>NM-BS06V(X)VI/VO(†)</b> |

VI = Inside vertical  
VO = Outside vertical

**SPRAY SEALANT**



Spray acrylic to reseal fiberglass after field  
modifications.

| Description           | Catalog No.          |
|-----------------------|----------------------|
| <b>12 fl. oz. can</b> | <b>NM-CLEAR-1215</b> |

**RESIN SEAL KIT**



To reseal fiberglass after field modifications. Vinyl  
Ester Resin

**Kit Contents**

- Resin
- Catalyst
- Stir stick and applicator

| Description     | Catalog No.      |
|-----------------|------------------|
| <b>1/2 pint</b> | <b>NM-RSK-05</b> |
| <b>1 pint</b>   | <b>NM-RSK-10</b> |



## NON-METALLIC CABLE TRAY & STRUT SYSTEMS

# ACCESSORIES

### COVERS FOR STRAIGHT SECTIONS



Material thickness: 1/8"  
Standard cover length: 120" (10')  
Standard mounting hardware: (10 each) #10 x 1/2" stainless, self-tapping screws provided with each section

### COVERS SELECTION GUIDE

**NM - FC P 12 120**

| NON-METALLIC | COVER TYPE               | MATERIAL                         | TRAY WIDTH | LENGTH        |
|--------------|--------------------------|----------------------------------|------------|---------------|
|              | FC = Flat<br>PC = Peaked | P = Polyester<br>V = Vinyl Ester | 6" to 36"  | 120" (10 ft.) |

Note : Peaked covers available for straight sections only.

### COVERS FOR FITTINGS

Material thickness: 1/8"  
Standard mounting hardware: (10 each) #10 x 1/2" stainless, self-tapping screws provided with each section

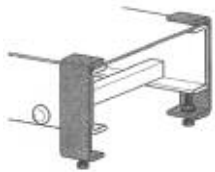
### COVERS SELECTION GUIDE

**NM - FC P 12 HB 90 24**

| NON-METALLIC | TYPE OF COVER | MATERIAL                         | WIDTH     | FITTING DESIGNATION     | ANGL E               | RADIU S        |
|--------------|---------------|----------------------------------|-----------|-------------------------|----------------------|----------------|
|              | FC = Flat     | P = Polyester<br>V = Vinyl Ester | 6" to 36" | HB<br>IV/OV<br>HT<br>HX | 30<br>45<br>60<br>90 | 12<br>24<br>36 |

Note : Peaked covers not available.  
Other fitting covers are available. Please consult your sales office.

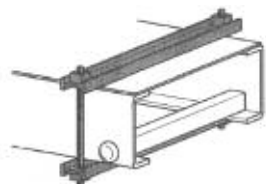
### STANDARD COVER CLAMP



Recommended for indoor applications. Available in both Polyester and Vinyl Ester Resin. Cover clamp available for flat covers only.

| Material          | Side Rail Height | Catalog No.   |
|-------------------|------------------|---------------|
| Polyester Resin   | 6"               | NM-XCC-P-9016 |
|                   | 4"               | NM-XCC-P-9014 |
|                   | 3"               | NM-XCC-P-9013 |
| Vinyl Ester Resin | 6"               | NM-XCC-V-9016 |
|                   | 4"               | NM-XCC-V-9014 |
|                   | 3"               | NM-XCC-V-9013 |

### HEAVY DUTY COVER CLAMP



Recommended for outdoor service. Heavy duty cover clamp available for flat covers only. Available in both Polyester and Vinyl Ester Resin.

| Material          | Side Rail Height | Catalog No.      |
|-------------------|------------------|------------------|
| Polyester Resin   | 6"               | NM-XWC-P-W*-9064 |
|                   | 4"               | NM-XWC-P-W*-9044 |
|                   | 3"               | NM-XWC-P-W*-9034 |
| Vinyl Ester Resin | 6"               | NM-XWC-C-W*-9064 |
|                   | 4"               | NM-XWC-C-W*-9044 |
|                   | 3"               | NM-XWC-C-W*-9034 |

\* W = tray width

### THERMOPLASTIC DRIVE RIVET



Shipped in packages of 25 pcs.

| Material      | Catalog No. |
|---------------|-------------|
| Thermoplastic | TPDR        |

Raised cover clamps available. Please consult your sales offices.