

FloorBoxes

from Thomas & Betts



Thomas & Betts
A Member of the ABB Group

This brochure presents an overview of the floor box product offering available from Thomas & Betts including:

Floor boxes
for concrete applications



Fire-rated
poke-through systems



Floor boxes
for wood subfloors



Access floor modules



FloorBoxes

from Thomas & Betts

Thomas & Betts floor box systems provide durable solutions for efficient and aesthetic in-floor distribution of power and communications services, whatever the floor type or space configuration.

Ideally suited for a variety of commercial, institutional and residential applications, including new construction and retrofit projects, Thomas & Betts floor boxes provide you with the flexibility to deliver power and data wherever it is required, safely and seamlessly.

From wood floors to concrete and raised floor applications, Thomas & Betts has the floor box you need to accommodate power, data, voice and A/V connections in one convenient access point.

www.floorboxes.ca

Thomas & Betts

A Member of the ABB Group

Concrete Applications

FLUSH SERVICE floor boxes for outlets at floor level

Bring power and data into open spaces efficiently and aesthetically.

— **Commercial and retail complexes**

— **Healthcare and educational facilities**

— **Sports arenas, gymnasiums, entertainment complexes**

— **Public spaces**

Round Models

600 Series

Cast Iron

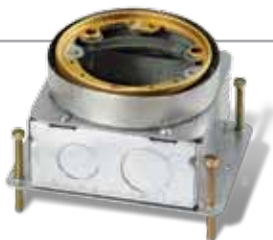
- Corrosion resistant for on-grade applications
- Watertight body
- Fully adjustable



68 Series

Stamped Steel

- Economical, lightweight option for above-grade applications
- Concrete-tight body
- Fully adjustable



68P Series

Nonmetallic

- Cost-efficient option for on- or below-grade applications
- Corrosion-resistant nonmetallic parallel conduit hubs
- Reduced labour and material costs
- Fully adjustable



68HP Series

Nonmetallic

- Superior capacity and mounting flexibility for on- or below-grade applications
- Corrosion-resistant nonmetallic parallel conduit hubs
- Reduced labour and material costs
- Fully adjustable

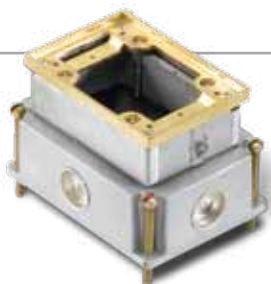


Square Models

640 Series

Cast Iron

- Corrosion resistant, watertight body for on-grade applications
- Available up to 4-gang
- Fully adjustable



840 Series

Cast Iron

- For shallow floor applications
- Corrosion resistant, watertight body for on-grade applications
- Available up to 3-gang
- Fully adjustable



740 Series

Stamped Steel

- Economical, lightweight option for above-grade applications
- Available in deep or shallow models, up to 3-gang
- Concrete-tight body
- Fully adjustable



640P Series

Nonmetallic

- Cost-efficient option for on- or below-grade applications
- Fast installation – no leveling required
- Available up to 3-gang
- Fully adjustable



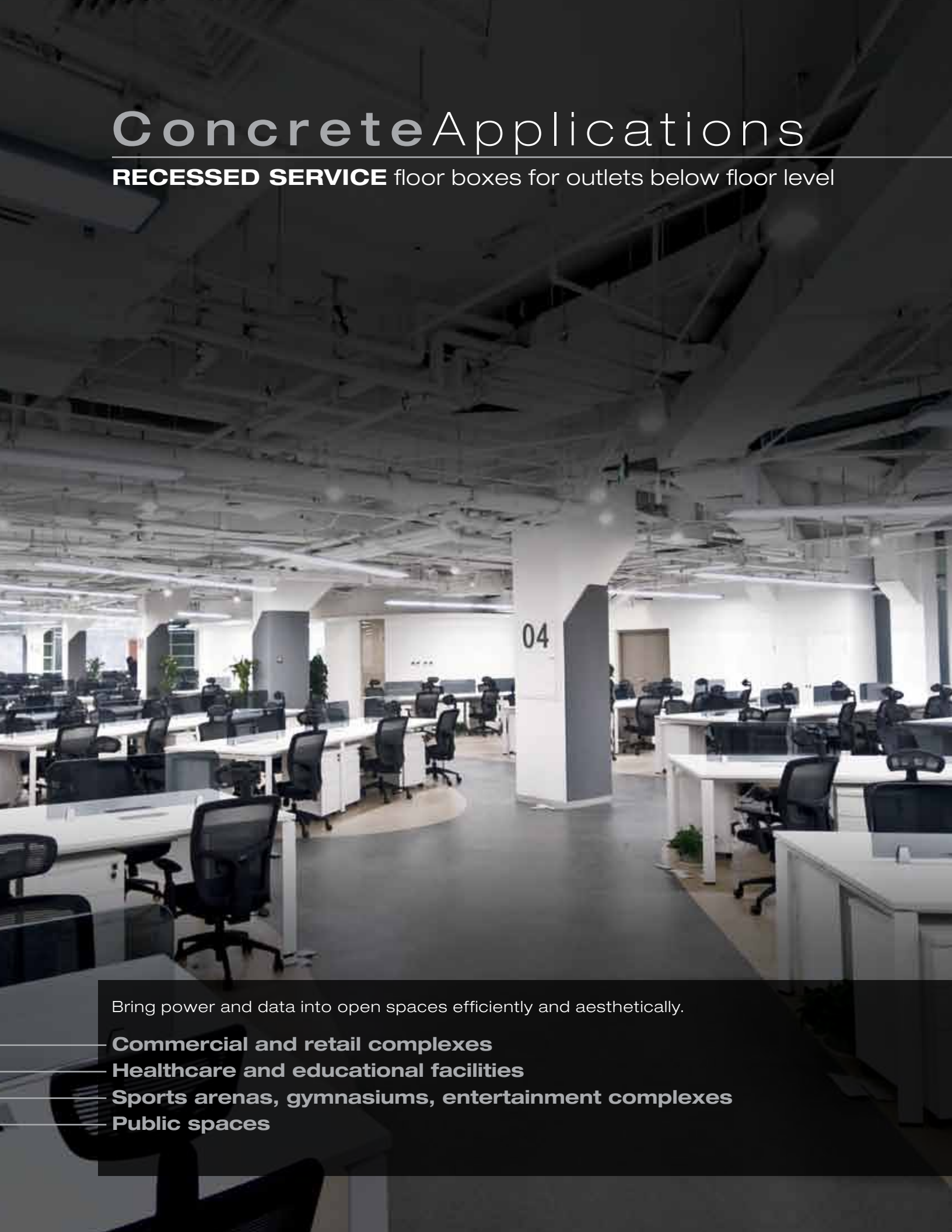
Covers

MopTite™ covers and carpet plates for flush service floor boxes are available in solid brushed brass and aluminum in a wide range of configurations to complement any interior space. Aluminum covers are available in durable black, grey, beige or brown powder-coat finishes.



Concrete Applications

RECESSED SERVICE floor boxes for outlets below floor level



Bring power and data into open spaces efficiently and aesthetically.

Commercial and retail complexes

Healthcare and educational facilities

Sports arenas, gymnasiums, entertainment complexes

Public spaces

Covers

664-CI Series

Cast Iron

- Corrosion resistant for on-grade applications
- Two-gang
- Eight threaded conduit openings – 3/4 in. and 1 in.



665-CI Series

Cast Iron

- Corrosion resistant for on-grade applications
- Four-gang – high capacity power and data solution
- Removable voltage dividers – customizable wiring configurations
- Eight knockouts – 3/4 in. and 1-1/4 in.



E976 Series

Nonmetallic

- Suitable for on- or below-grade applications
- Maximum jobsite flexibility – create two- or three-gang boxes on site
- 1/2-, 3/4- and 1-in. knockouts



664-S Series

Stamped Steel

- Cost efficient and lightweight for above-grade applications
- Two-gang, multi-service floor box
- Six 3/4-in. knockouts



668-S Series

Stamped Steel

- Low-profile solution for above grade applications
- High capacity (192 cu. in.) for shallow concrete pours
- Four-gang; removable voltage dividers



663-SC Series

Stamped Steel

- Cost efficient and lightweight for above-grade applications
- Two-gang, multi-service floor box
- Semi-adjustable



664-SC Series

Stamped Steel

- Cost efficient and lightweight for above-grade applications
- Two-gang, multi-service floor box
- Semi-adjustable



665-AV2 Series

Stamped Steel

- For above-grade applications
- Pull pre-terminated AV cables directly through 2-inch conduit
- Four-gang for power and AV connections
- Accepts Extron® MAAP plates to accommodate any AV requirements



667-SC Series

Stamped Steel

- Cost efficient and lightweight for above-grade applications
- Largest capacity concealed-service floor box on the market
- Four “double gangs” house up to eight receptacles per box



MopTite™ covers and carpet plates for recessed service floor boxes are available in metallic and nonmetallic versions in a wide range of configurations. Metallic versions come in solid brushed brass and aluminum; nonmetallic polycarbonate versions are available in black, grey, beige or brown to complement any interior.



FireRated Poke-ThroughSystems

Flush Power and Communications, Furniture Feed

Maximize the capacity of fire-rated poke-through locations.

Commercial and retail complexes

Healthcare and educational facilities

Sports arenas, gymnasiums, entertainment complexes

Public spaces

Flush Service

FPT4 Series

4-inch Core Drill Size

- Maximum capacity and flexibility for flush-mounted power and communications devices
- Configurable design – four standard power and communications configurations
- Integral junction box – five 1/2-in. and five 3/4-in. knockouts
- 27 cubic-inch capacity



FPT3 Series

3-inch Core Drill Size

- For above-grade applications
- One duplex receptacle, two communications outlets
- Three 1/2-in. and four 3/4-in. knockouts
- 13 cubic-inch capacity



FPT Flush Series

3-inch Core Drill Size

- Cost-efficient solution for installing duplex receptacle in existing floors
- One duplex receptacle
- Three 1/2-in. and four 3/4-in. knockouts
- Integral junction box – five 1/2-in. and five 3/4-in. knockouts
- 27 cubic-inch capacity



Furniture Feed

FFPT4 Series

4-inch Core Drill Size

- 3/4-in. hub for power wiring; 1-1/4-in. hub for data communications cabling
- Integral junction box – five 1/2-in. and five 3/4-in. knockouts
- 27 cubic-inch capacity



FFPT3 Series

3-inch Core Drill Size

- High capacity, straight-through wiring solution
- Concentric 1-1/4-in. and 2-in. hub for power or data communications cabling
- 13 cubic-inch capacity



FPT Furniture Feed Series

3-inch Core Drill Size

- Flexible, cost-effective furniture feed solution
- Two 1/2-in. hubs and one 3/4-in. hub for power and data communications wiring (plugs included)
- Integral junction box – five 1/2-in. and five 3/4-in. knockouts
- 27 cubic-inch capacity



Covers

MopTite™ covers and carpet plates for poke-through systems are available in solid brushed brass and aluminum in a wide range of configurations. Aluminum covers are available in durable black, grey, beige or brown powder-coat finishes to blend in with any décor.



WoodSubfloorApplications

SINGLE and MULTI-GANG solutions



Full range of wood subfloor options for residential and commercial environments.

— **Single and multi-family housing**

— **Schools**

— **Offices**

Covers

71W Series

Floor Box Kit

- Single gang
- For above-grade applications
- Available with duplex or GFCI receptacle



E971 Series

Drop-in Box

- Prewired single power receptacle or two communications outlets
- Cost-efficient and lightweight for above-grade applications
- Optional hole saw



670 Series

Cast Iron

- Corrosion resistant for on-grade applications
- 1/2-in. and 3/4-in. threaded conduit openings
- Single gang



68R Cover Kit

Nonmetallic

- Cost-effective recessed service box options – wood subfloor, raised floor and concrete applications
- Accepts one duplex or GFCI receptacle



60W Series

Rectangular Floor Boxes

- Mounting brackets adjust to height of different flooring materials
- 1/2 in., 3/4 in. and 1 in. knockouts
- Removable voltage dividers included with multi-gang boxes
- Full range of metallic and nonmetallic cover and flange options

61W One-gang

(31 cubic inches)



62W Two-gang

(60 cubic inches)



63W Three-gang

(90 cubic inches)



MopTite™ covers and carpet plates for wood subfloor applications are available in metallic and nonmetallic versions in a wide range of configurations. Metallic versions come in solid brushed brass and aluminum; nonmetallic polycarbonate versions are available in black, grey, beige or brown to complement any interior.



AccessFloorModules

Durable and versatile wiring solutions for **RAISED FLOORS**

Keep wire and data connections close at hand but not under foot.

Libraries

Computer rooms

Offices

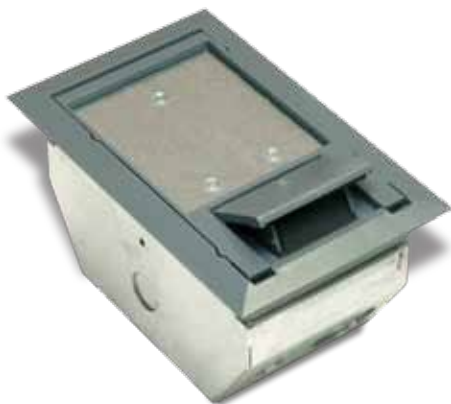
AFM Series

Rectangular Access Floor Modules

- Manage broad range of wiring needs – single power lines to complex data and voice systems
- Range of module sizes and options
- Interchangeable power and data panels adapt to changing needs
- Durable solid steel covers support heavy loads and protect connections
- Complements any décor

AFM-2 Two-gang

(75 cubic inches)



AFM-6 Six-gang

(225 cubic inches)



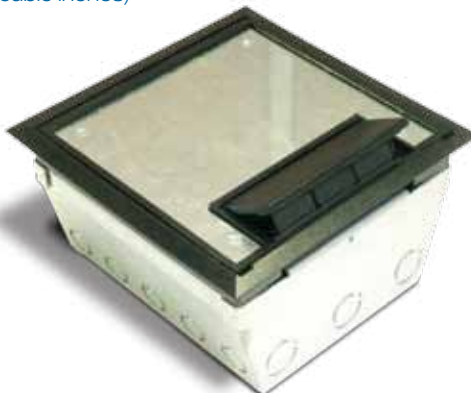
AFM-4 Four-gang

(150 cubic inches)



AFM-8 Eight-gang

(325 cubic inches)



MopTite™ covers and carpet plates for access floor modules are available in metallic and nonmetallic versions in a wide range of configurations. Metallic versions come in solid brushed brass and aluminum. Nonmetallic polycarbonate covers and carpet flanges include a 5/32 in. steel plate for maximum durability.



FloorBoxes

www.floorboxes.ca



from Thomas & Betts

With a variety of manufacturers to choose from, engineers, end-users and installers often see Thomas & Betts as the logical first choice for a variety of reasons:

- Preferred supplier to the Canadian electrical industry for close to a century
- A wide range of ever-evolving quality products and superior solutions customized to meet application-specific challenges
- An established company invested and committed to helping engineers, contractors and end-users reduce costs while increasing performance and safety
- Canadian-based sales and marketing, customer service and logistics
- 80% of products sold in Canada are manufactured in Canada

Thomas&Betts

A Member of the ABB Group

FloorBoxes

from Thomas & Betts

Head Office - Canada

Thomas & Betts Limited
700 Thomas Avenue
Saint-Jean-sur-Richelieu
Quebec J2X 2M9

Tel.: (450) 347-5318

Fax: (450) 347-1976

Sales

- **Atlantic Provinces**
Tel.: (902) 450-1307
Toll Free: 1-877-862-4357
Fax: (902) 450-1309
- **Quebec**
Tel.: (450) 466-1102
Toll Free: 1-800-465-1399
Fax: (450) 466-1163
- **Ontario**
Tel.: (905) 858-1010
Toll Free: 1-877-291-7771
Fax: (905) 858-1080
- **Manitoba/Saskatchewan**
Tel.: (604) 598-9811
Toll Free: 1-866-540-8220
Fax: (604) 598-9840
- **Alberta**
Tel.: (780) 424-7092
Toll Free: 1-888-664-5666
Fax: (780) 424-7093
Toll Free: 1-866-424-4082
- **British Columbia**
Tel.: (604) 598-9811
Toll Free: 1-866-540-8220
Fax: (604) 598-9840

www.tnb.ca

www.floorboxes.ca

Thomas & Betts. Your best connection for innovative solutions.

Thomas & Betts

A Member of the ABB Group