

Improve your productivity with our ergonomic battery-powered crimping tool.



150,000 cycle lifespan

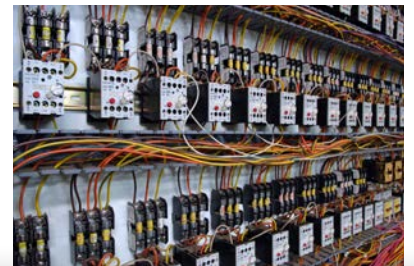
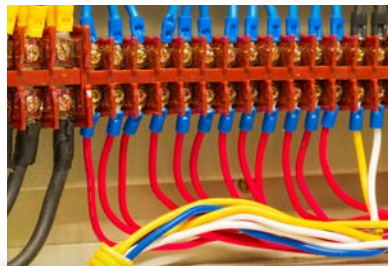
Extremely light and efficient

Includes DIE for Dragon Tooth™ terminals

The Sta-Kon® **BAT22-6NV2** is motorized and automatic for effortless, single-lever crimping.

This is an excellent tool for various vertical markets including panel builders, system integrators, data centers, utilities and various other OEMs and MROs.

- Comes complete with extra battery, charger and carrying case
- Powerful lithium-ion battery with charge-level indicator
- Single-lever motorized operation for easy manual preclamping, automatic crimping and auto-retract functions
- Motor-stall protection in case of faulty operation
- LED work light illuminates work areas



Thomas & Betts. Your best connection for innovative solutions.

Get power in reserve.

When it comes to automatic crimping, the new BAT22-6NV2* gives you the complete package.

* Dies sold separately.

Select the proper dies for the intended crimp.

DIE SETS	DESCRIPTION
DIE2001	Sta-Kon® insulated 22-10 AWG terminals
DIE2002	Sta-Kon® non-insulated 22-10 AWG terminals
DIE2005	Sta-Kon® non-insulated 16-14, 12-10, 8-6 AWG tubular terminals
DIE2007	Sta-Kon® insulated 8-6 AWG tubular terminals
DIE2009	Sta-Kon® wire joints RB, RC, RP series 22-10
DIE2500	Spec-Kon™ insulated 22-10 AWG terminals
DIE1806**	Dragon Tooth™ terminals 22F, L, R-6 series

** DIE1806 is not CSA certified or UL Listed.



Take advantage of our benefits.



FEATURES	BAT22-6NV2	BAT22-6
Tool power	Electric gear driven — No hydraulics to leak or fail	Hydraulic pressure — Failures due to leaks
Body design	Compact design, light weight	Medium design, medium weight
Crimping head	Hardened steel w/build-in light	Aluminum – failures due to cracking
Expected life	150,000 crimps	40,000 crimps
Service interval	40,000 crimps	10,000 crimps
Self-calibrating	Dead-end design, closed dies = calibration	Dead-end design, closed dies = calibration
Bad-crimp detection	Audible beep and flashing light	None
Memory chip	# crimps, records errors, user, serial #	None
Battery	Dewalt 10.8 V lithium-ion	Special 9.6 V NiCd
Crimps / charge	250	120
Power read-out	Push button LED power read-out	None
Nominal ram speed	1 second	5 seconds

Atlantic Provinces

Thomas & Betts Limited
Tel.: (902) 450-1307
Toll Free: 1-877-862-4357
Fax: (902) 450-1309

Quebec

Thomas & Betts Limited
Tel.: (450) 466-1102
Toll Free: 1-800-465-1399
Fax: (450) 466-1163

Ontario

Thomas & Betts Limited
Tel.: (905) 635-7888
Toll Free: 1-877-291-7771
Fax: (905) 635-7889

Manitoba/Saskatchewan

Thomas & Betts Limited
Tel.: (604) 598-9811
Toll Free: 1-866-540-8220
Fax: (604) 598-9840

Alberta

Thomas & Betts Limited
Tel.: (780) 424-7092
Toll Free: 1-888-664-5666
Fax: (780) 424-7093
Toll Free: 1-866-424-4082

British Columbia

Thomas & Betts Limited
Tel.: (604) 598-9811
Toll Free: 1-866-540-8220
Fax: (604) 598-9840

