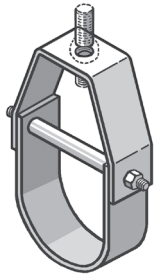


Nonmetallic - Strut systems

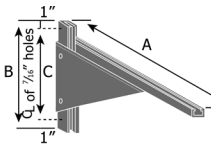
Nonmetallic pipe hangers, brackets and beam clamps

Clevis hangers



Cat. No.	Nominal pipe size		Max. O.D. range		Hanger rod size	Design load	
	(in)	(mm)	(in)	(mm)		(lb)	N
NM-SCH200	2	50.8	2½	63.5	½ - 13	90	0.40
NM-SCH212	2½	63.5	¾	82.6	½ - 13	120	0.54
NM-SCH300	3	76.2	¾	98.4	½ - 13	160	0.71
NM-SCH400	4	101.6	5	127	⅝ - 11	250	1.12
NM-SCH600	6	152.4	7	177.8	⅝ - 11	400	1.79
NM-SCH800	8	203.2	9	228.6	⅝ - 11	450	2.01
NM-SCH1000	10	250	11¾	288.9	⅝ - 11	500	2.24
NM-SCH1200	12	304.8	13½	342.9	⅝ - 11	600	2.69

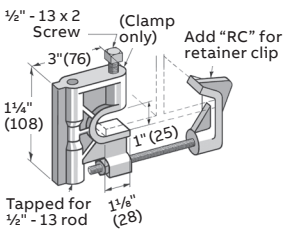
Support brackets



Cat. No.*	Dimension "A"		Dimension "B"		Dimension "C"		Design load	
	(in)	(mm)	(in)	(mm)	(in)	(mm)	(lb)	N
SB 1								
NM-SB1-6P	10	254	12	304.8	10	254	1,600	7117
NM-SB1-9P	13	330.2	12	304.8	10	254	1,100	4893
NM-SB1-12P	16	406.4	12	304.8	10	254	850	3781
NM-SB1-18P	22	558.8	12	304.8	10	254	725	3225
NM-SB1-24P	28	711.2	12	304.8	10	254	480	2135
NM-SB2-24P	26	660.4	21	533.4	15	381	750	3336
NM-SB2-30P	32	812.8	21	533.4	15	381	750	3336
NM-SB2-36P	38	965.2	21	533.4	15	381	750	3336

*Substitute "V" for "P" when vinyl ester resin is needed. Design loads based on uniform. Allowable load is based on a total load, uniformly distributed over the length of the rack. Safety factor = 2.0 loading with a safety factor of 3.

Beam clamps



Cat. No.	Description	Design load	
		(lb/ft)	(kg/m)
NM-SBC	Beam clamp	800	3.56
NM-SBC-RC	Beam clamp with retainer clip	800	3.56

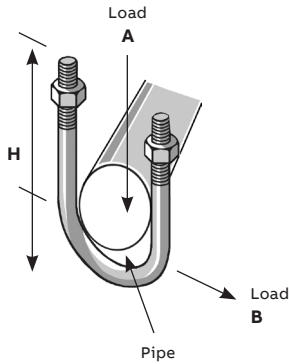
Safety factor of 3 on design load.

Nonmetallic - Strut systems

Nonmetallic pipe hangers and hardware

U-bolt

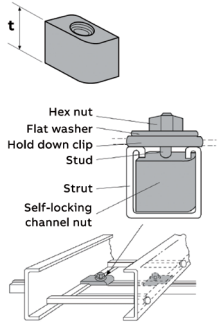
Cat. No.	Nominal pipe size		H height (in)	Design load A		Design load B		Max. torque		Weight / C	
	(in)	(mm)		(lb)	N	(lb)	N	in - lb	N - m	(lb)	(kg)
NM-FUB050	½	12.7	2.41	300	1334	150	667	30	3.4	3.5	1.59
NM-FUB075	¾	19.1	2.60							3.9	1.77
NM-FUB100	1	25.4	2.85							4.4	2.00
NM-FUB114	1¼	31.8	3.16							4.8	2.18
NM-FUB112	1½	38.1	3.47							5.2	2.36
NM-FUB200	2	50.8	4.18	600	2669	200	890	60	6.8	7.7	3.49
NM-FUB212	2½	63.5	4.68							10.2	4.63
NM-FUB300	3	76.2	5.31							12.6	5.72
NM-FUB312	3½	88.9	5.81							15.1	6.85
NM-FUB400	4	101.6	6.31								
										17.6	7.98



Safety factor of 3 on design load.

Channel nut

Part. No.	Thread size	Weight / C		Dimension "t"	
		(lb)	(g)	(in)	(mm)
NM-FCN25	¼-20	5.58	2531	1½ ₁₆	27
NM-FCN38	¾-16	5.31	2408	1½ ₁₆	27
NM-FCN12	½-13	5.27	2390	1½ ₁₆	27



Vinyl Ester resin is the standard. Channel nuts are self locking and designed for use with EC-158 and EC-158D strut only. Resistance to slip = 450 Lbs. per bolt Pull out strength = 700 Lbs. per bolt . Safety factor of 3 on design load.

Flat washer

Cat. No.	Hole size (in)	Weight / C	
		(lb)	(g)
NM-F38W	¾	0.5	227
NM-F12W	½		
NM-F58W	⅝		
NM-F34W	¾		
NM-F100W	1		

