

## Micro-Gard

### Plenum and riser

Carlton Micro-Gard plenum and Micro-Gard riser are specifically designed to provide fiber pathways in plenum and riser applications in multi-dwelling units (MDUs) and other premise structures.

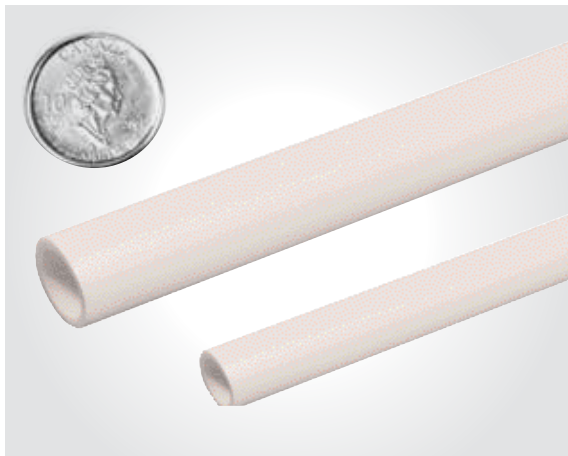
The 8/6 and 12/10 mm size conduit can be installed individually or used to optimize space in existing duct structures. And the small size significantly reduces the structural damage caused during pass-throughs.

Micro-Gard plenum and riser are listed for plenum and riser applications. They're easy to handle, easy to install and easy to conceal, thus making them the ideal MDU cable management system.

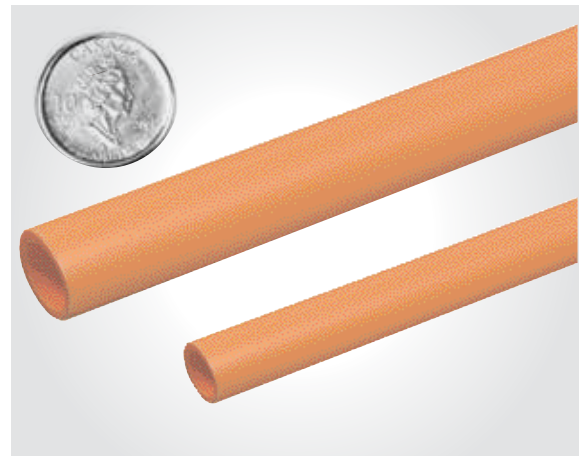
Carlton Micro-Gard plenum and Micro-Gard riser. Small. Slick. Speedy. Ideal for telecom installs.

#### Features

- cUL listed for plenum and riser applications
- Two sizes: 8/6 mm and 12/10 mm – the smaller sizes accommodate the size constraints of multi-dwelling units and make installations faster and easier
- Smooth interior wall eliminates snag points and provides low coefficient of friction regardless of whether jetting or pull-tape is used
- Superior burn-through resistance for longer cable pulls
- Pre-installed pull-tape makes installing cable faster and easier (option available for empty duct)
- Sequentially marked footage to easily identify lengths and reduce waste
- Reel sizes from 1,000 to 5,000 feet for easy handling on the jobsite
- Future-proofing raceway system for fast, easy wire/cable upgrades, changes and moves
- Used in cable bundles



Micro-Gard plenum



Micro-Gard riser

## Micro-Gard

### Plenum and riser



Cat. no.	Size (mm)	Type	Colour	Pre-installed tape	Min. bend radius (in.)*	Reel length (ft.)	Reel wt. (lb)
MGP08MT-1000	8/6	Plenum	White	200 lb	2	1,000	24
MGP08MT-2500	8/6	Plenum	White	200 lb	2	2,500	24
MGP08MT-5000	8/6	Plenum	White	200 lb	2	5,000	36
MGP12MT-1000	12/10	Plenum	White	200 lb	4	1,000	24
MGP12MT-2500	12/10	Plenum	White	200 lb	4	2,500	24
MGR08JT-1000	8/6	Riser	Orange	200 lb	2	1,000	24
MGR08JT-2500	8/6	Riser	Orange	200 lb	2	2,500	24
MGR08JT-5000	8/6	Riser	Orange	200 lb	2	5,000	36
MGR12JT-1000	12/10	Riser	Orange	200 lb	4	1,000	24
MGR12JT-2500	12/10	Riser	Orange	200 lb	4	2,500	24
MGR12JT-5000	12/10	Riser	Orange	200 lb	4	5,000	36

\* Important: Do not exceed the minimum bend radius during installation of the product.

#### How to interpret a catalogue number

Position 1 product	Position 2 type	Position 3 size	Position 4 colour	Position 5 pull line	Position 6 length
MG = Micro-Gard	P = Plenum R = Riser	08 = 8/6 mm 12 = 12/10 mm	J = Orange M = White	T = 200 lb tape	Example-1000 = 1,000 feet