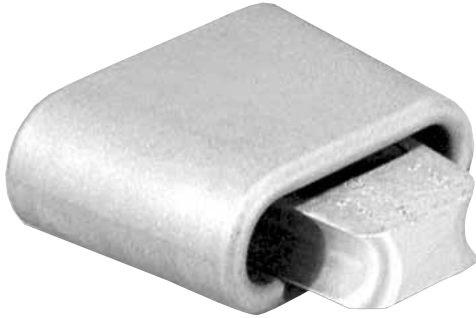


PowerTap wedges



PowerTap wedges

Cat. no.	Wire combinations (AWG or kcmil)
Small taps – Use shell PT-white	
PT 1010	1/0-#2
PT 1011	#2-#2, 1/0-#4
PT 1012	#2-#4, 1/0-#6
PT 1013	#4-#4, #2-#6
PT 1014	#6-#6, #4-#6
PT 1015	#8-#8
Medium taps – Use shell PT-blue	
PT 4001	1/0-1/0, 2/0-#2, 1/0-#2
PT 4002	2/0-2/0, 3/0-1/0, 4/0-#2
PT 4003	3/0-#6, 2/0-#6
PT 4004	2/0-#4, 3/0-#4
PT 4005	2/0-1/0, 3/0-#2
PT 4006	4/0-#4
PT 4007	4/0-#4
PT 4008	3/0-2/0, 4/0-1/0
PT 4009	3/0-3/0, 4/0-2/0
PT 4010	4/0-3/0
PT 4011	4/0-4/0
266 kcmil taps – Use shell PT-blue	
PT 26601	266.8-#6
PT 26602	266.8-#4
PT 26603	266.8-#2
PT 26604	266.8-1/0
PT 26605	266.8-2/0
PT 26606	266.8-3/0
PT 26607	266.8-4/0
PT 26608	-
PT 26609	266.8-266.8

Note: For a kit containing a wedge and PowerTap shell, add “-K” suffix to the catalog number.

Reliable performance in the harshest of environments.

- Low stresses produced at interfaces preclude significant conductor creep and minimize loss of clamping force on connectors
- Contact forces are nearly constant during temperature changes or conductor compaction
- Driving action helps remove oxidation from conductor and lowers contact resistance
- RUS accepted

Cat. no.	Wire combinations (AWG or kcmil)
350 kcmil taps – Use shell PT-blue	
PT 35000	350-#6
PT 35001	350-#4
PT 35002	350-#2
PT 35003	350-1/0
PT 35004	350-2/0
PT 35005	350-3/0
PT 35006	350-4/0
PT 35007	350-350
336-556 kcmil taps – Use shell PT-yellow	
PT 33601	336.4-336.4
PT 33602	336.4-266.8
PT 33603	336.4-4/0
PT 33604	336.4-3/0
PT 33605	336.4-2/0
PT 33606	336.4-1/0
PT 33607	336.4-#2
PT 33608	336.4-#4
PT 33609	336.4-#6
PT 47701	477-#2 or -#3
PT 47702	477-#4 or -#5
PT 47703	477-#6
PT 55601	556.5-477 or -556.5
PT 55602	477-477; 556.5-336.4
PT 55603	477-336.4; 556.5-266.8
PT 55604	477-266.8; 556.4-3/0 or -4/0
PT 55605	477-4/0; 556.5-2/0
PT 55606	477-3/0; 556.5-#1
PT 55607	477-2/0; 556.5-#1
PT 55608	477-1/0; 556.5-#2
PT 55609	556.5-#2 or -#3
PT 55611	556.5-#4 or -#5
PT 55612	556.5-#6

PowerTap wedges (continued)

PowerTap wedges

Cat. no.	Wire combinations (AWG or kcmil)
795 kcmil taps – Use shell PT-yellow	
PT 79500	795-795
PT 79501	795-715
PT 79502	795-636
PT 79503	795-556.5
PT 79504	795-477
PT 79505	795-397.5
PT 79506	795-336.4
PT 79507	795-266.4
PT 79508	795-4/0
PT 79509	795-3/0
PT 79510	795-2/0
PT 79511	795-1/0
PT 79512	795-#2
PT 79513	795-#4
PT 79514	795-#6
1,033.5 kcmil taps – Use shell PT-yellow	
PT 103300	1,033.5-1,033.5
PT 103301	1,033.5-954
PT 103302	1,033.5-795
PT 103303	1,033.5-715.5
PT 103304	1,033.5-636
PT 103305	1,033.5-556.5
PT 103306	1,033.5-477
PT 103307	1,033.5-397.5
PT 103308	1,033.5-336.4
PT 103309	1,033.5-266.8
PT 103310	1,033.5-4/0
PT 103311	1,033.5-3/0
PT 103312	1,033.5-2/0
PT 103313	1,033.5-1/0
PT 103314	1,033.5-#2
PT 103315	1,033.5-#4
PT 103316	1,033.5-#6

Cat. no.	Wire combinations (AWG or kcmil)
1,192 kcmil taps – Use shell PT-yellow	
PT 119200	1,192.5-1,192.5
PT 119201	1,192.5-1,033.5
PT 119202	1,192.5-954
PT 119203	1,192.5-795
PT 119204	1,192.5-715.5
PT 119205	1,192.5-636
PT 119206	1,192.5-556.5
PT 119207	1,192.5-477
PT 119208	1,192.5-397.5
PT 119209	1,192.5-336.4
PT 119210	1,192.5-266.8
PT 119211	1,192.5-4/0
PT 119212	1,192.5-3/0
PT 119213	1,192.5-2/0
PT 119214	1,192.5-1/0
PT 119215	1,192.5-#2
PT 119216	1,192.5-#4
PT 119217	1,192.5-#6

PowerTap wedges

PowerTap stirrups & terminal lugs



Aluminum stirrup connectors built for strength, conductivity and longevity.

- Bail made of tin-plated copper wire for high conductivity and corrosion resistance
- Wide range of stirrups fit a variety of clamp sizes
- Low stresses produced at interfaces preclude significant conductor creep and minimize loss of clamping force on connectors
- Contact forces remain nearly constant during temperature changes or conductor compaction
- Driving action helps remove oxidation from conductor and lowers contact resistance
- RUS accepted

PowerTap stirrups

Cat. no.	Wire size (AWG or kcmil)	Bail size
Use shell PT-blue		
PT 4020 S 2	#1, 1/0, 2/0	#2
PT 4005 S 10	1/0, 2/0	1/0
PT 4004 S 2	2/0, 3/0	#2
PT 4007 S 2	3/0, 4/0	#2
PT 4007 S 10	3/0, 4/0	1/0
PT 4008 S 20	3/0, 4/0	2/0
PT 26602 S 2	266.8	#2
PT 26603 S 10	266.8	1/0
PT 35002 S 10	350 AAC	1/0
PT 35002 S 2	350 AAC	#2
Use shell PT-white		
PT 1050 S 2	#6	#2
PT 1011 S 2	#5, #4, #2	#2
PT 33606 S 10	336.4	1/0

Cat. no.	Wire size (AWG or kcmil)	Bail size
Use shell PT-yellow		
PT 33605 S 20	336.4	2/0
PT 33604 S 40	336.4	4/0
PT 47701 S 10	397.4, 477	1/0
PT 55607 S 20	397.4, 477	2/0
PT 55606 S 40	397.4, 477	4/0
PT 55608 S 10	556	1/0
PT 55607 S 20	556	2/0
PT 55605 S 40	556	4/0
PT 79511 S 40	636	4/0
PT 79512 S 20	636	2/0
PT 79511 S 20	795	2/0
PT 79509 S 40	795	4/0
PT 103312 S 40	1033.5	4/0



PT 2 N 795

PowerTap terminal lugs

Cat. no.	Wire size (AWG or kcmil)	Tap groove	Spade type
PT 2 N 4/0	#2-#6, 1/0-4/0, 266.8	4/0 str.	2-hole paddle
PT 2 N 336	336.4, 397.5, 477, 556.5	336.4 str.	2-hole paddle
PT 2 N 795	636, 795, 954, 1,033.5	795 str.	2-hole paddle
PT 4 N 4/0	#2-#6, 1/0-4/0, 266.8	4/0 str.	4-hole paddle
PT 4 N 336	336.4, 397.5, 477, 556.5	336.4 str.	4-hole paddle
PT 4 N 795	636, 795, 954, 1,033.5	795 str.	4-hole paddle
PT 4 N 336 F	336.4, 397.5, 477, 556.5	336.4 str.	4-hole flag
PT 4 N 795 F	636, 795, 954, 1,033.5	795 str.	4-hole flag

Strong lugs that withstand corrosion.

- 2-hole paddle, 4-hole paddle and 4-hole flag models available
- Fit a variety of lug sizes