

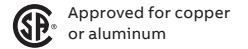
# PL17 Series

100 A 600 V; polyphase

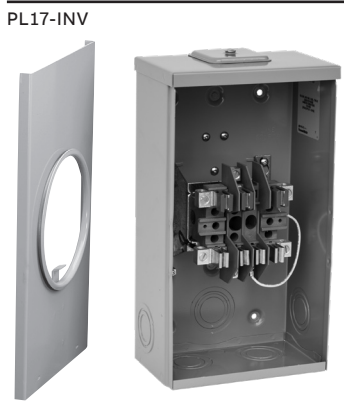
**Product specifications**

- Conductor range: 6–1/0 AWG
- Aluminum tunnel type connectors for both load and line sides
- For overhead, underground and combination overhead/underground
- Supplied with screw type ring

- Weatherproof Type 3R enclosure
- Primarily used in: All provinces



| Cat. no.                             | Description  | Dimensions (in.)               |                                |                                | Weight each       |     |
|--------------------------------------|--|--------------------------------|--------------------------------|--------------------------------|-------------------|-----|
|                                      |  | H                              | W                              | D                              | lb                | kg  |
| <b>7 Jaw</b>                         |  |                                |                                |                                |                   |     |
| PL17-INV                             | Overhead, hub opening                                    | 15 <sup>5</sup> / <sub>8</sub> | 8 <sup>3</sup> / <sub>16</sub> | 5 <sup>7</sup> / <sub>16</sub> | 12                | 5.4 |
| PL17-INV-HQ                          | Overhead, hub opening (Hydro-Québec approved)            | 15 <sup>5</sup> / <sub>8</sub> | 8 <sup>3</sup> / <sub>16</sub> | 5 <sup>7</sup> / <sub>16</sub> | 12                | 5.4 |
| PL17-INTV-HQ                         | Underground (Hydro-Québec spec)                          | 15 <sup>5</sup> / <sub>8</sub> | 8 <sup>3</sup> / <sub>16</sub> | 5 <sup>7</sup> / <sub>16</sub> | 12                | 5.4 |
| PL17-INTCV                           | Combination overhead-underground                         | 15 <sup>5</sup> / <sub>8</sub> | 8 <sup>3</sup> / <sub>16</sub> | 5 <sup>7</sup> / <sub>16</sub> | 12                | 5.4 |
| PL17-INTCV-HQ                        | Combination overhead-underground (Hydro-Québec approved) | 15 <sup>5</sup> / <sub>8</sub> | 8 <sup>3</sup> / <sub>16</sub> | 5 <sup>7</sup> / <sub>16</sub> | 12                | 5.4 |
| PL17-V                               | Overhead, hub opening                                    | 15 <sup>5</sup> / <sub>8</sub> | 8 <sup>3</sup> / <sub>16</sub> | 5 <sup>7</sup> / <sub>16</sub> | 12                | 5.4 |
| PL17-TV                              | Underground  | 15 <sup>5</sup> / <sub>8</sub> | 8 <sup>3</sup> / <sub>16</sub> | 5 <sup>7</sup> / <sub>16</sub> | 12                | 5.4 |
| PL17-TCV                             | Combination overhead-underground                         | 15 <sup>5</sup> / <sub>8</sub> | 8 <sup>3</sup> / <sub>16</sub> | 5 <sup>7</sup> / <sub>16</sub> | 12                | 5.4 |
| <b>Factory-installed accessories</b> |  |                                |                                |                                |                   |     |
| Include: -IN                         |  |                                |                                |                                | Insulated neutral |     |



**Diagrams**

