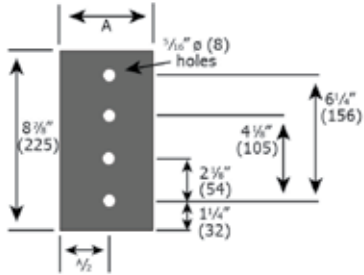


Nonmetallic - Channel tray systems

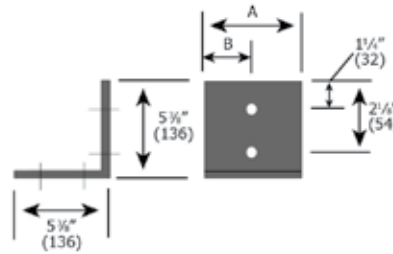
Standard and horizontal 90°, 45°, 30° & 22.5° splice plates



Standard splice plates

Cat. No.	Material
NM-XSS-1001-SS6	Stainless steel
NM-XFP-1001-SS6	Polyester resin
NM-XFV-1001-SS6	Vinylester resin

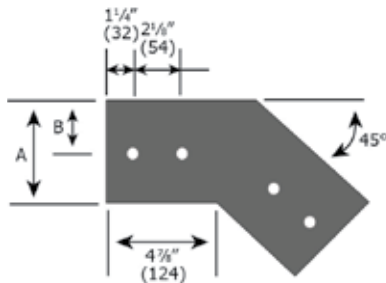
Supplied in pairs. Supplied with standard hardware, 1/4" stainless steel 316.



Horizontal 90° splice plates

Cat. No.	Material
NM-XSS-1901H-SS6	Stainless steel
NM-XFP-1901H-SS6	Polyester resin
NM-XFV-1901H-SS6	Vinylester resin

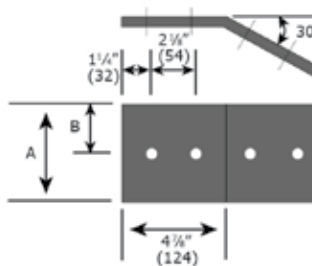
Supplied in pairs. Supplied with standard hardware, 1/4" stainless steel 316.



Horizontal 45° splice plates

Cat. No.	Material
NM-XSS-1451H-SS6	Stainless steel
NM-XFP-1451H-SS6	Polyester resin
NM-XFV-1451H-SS6	Vinylester resin

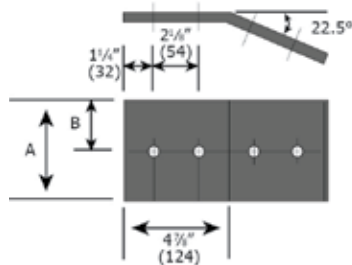
Supplied in pairs. Supplied with standard hardware, 1/4" stainless steel 316.



Horizontal 30° splice plates

Cat. No.	Material
NM-XSS-1301H-SS6	Stainless steel
NM-XFP-1301H-SS6	Polyester resin
NM-XFV-1301H-SS6	Vinylester resin

Supplied in pairs. Supplied with standard hardware, 1/4" stainless steel 316.



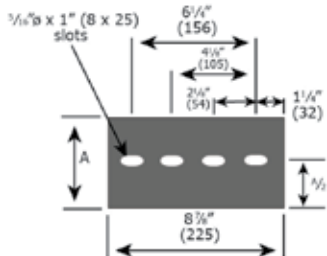
Horizontal 22.5° splice plates

Cat. No.	Material
NM-XSS-1221H-SS6	Stainless steel
NM-XFP-1221H-SS6	Polyester resin
NM-XFV-1221H-SS6	Vinylester resin

Supplied in pairs. Supplied with standard hardware, 1/4" stainless steel 316.

Nonmetallic - Channel tray systems

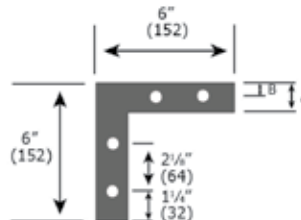
Expansion and vertical 90°, 45°, 30° & 22.5° splice plates



Expansion splice plates

Cat. No.	Material
NM-XSS-1011-SS6	Stainless steel
NM-XFP-1011-SS6	Polyester resin
NM-XFV-1011-SS6	Vinylester resin

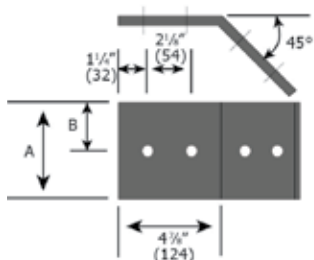
Supplied in pairs. Supplied with standard hardware, 1/4" stainless steel 316.



Vertical 90° splice plates

Cat. No.	Material
NM-XSS-1901V-SS6	Stainless steel
NM-XFP-1901V-SS6	Polyester resin
NM-XFV-1901V-SS6	Vinylester resin

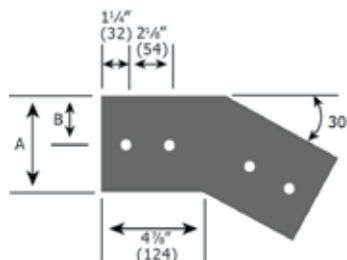
Supplied in pairs. Supplied with standard hardware, 1/4" stainless steel 316.



Vertical 45° splice plates

Cat. No.	Material
NM-XSS-1451V-SS6	Stainless steel
NM-XFP-1451V-SS6	Polyester resin
NM-XFV-1451V-SS6	Vinylester resin

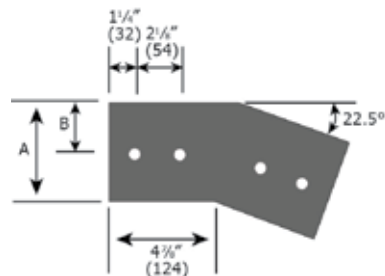
Supplied in pairs. Supplied with standard hardware, 1/4" stainless steel 316.



Vertical 30° splice plates

Cat. No.	Material
NM-XSS-1301V-SS6	Stainless steel
NM-XFP-1301V-SS6	Polyester resin
NM-XFV-1301V-SS6	Vinylester resin

Supplied in pairs. Supplied with standard hardware, 1/4" stainless steel 316.



Vertical 22.5° splice plates

Cat. No.	Material
NM-XSS-1221V-SS6	Stainless steel
NM-XFP-1221V-SS6	Polyester resin
NM-XFV-1221V-SS6	Vinylester resin

Supplied in pairs. Supplied with standard hardware, 1/4" stainless steel 316.