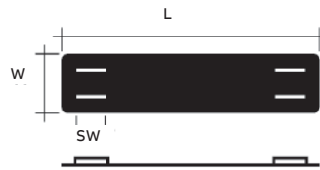


ID tagging system



Cat. no.	Designation	Max. no. of single-character markers	Quantity per pack	Length (L) (mm)	Width (W) (mm)	Slot width (SW) (mm)
SSM*	Single-character marker	–	50 (5x10) pcs	5.5	10.9	4.8
SSH6	47 mm carrier strip	6	5.5	47.0	10.3	4.8
SSH9	65 mm carrier strip	9	5.5	65.0	10.3	4.8
SSH13	87 mm carrier strip	13	5.5	87.0	10.3	4.8
SSH17	107 mm carrier strip	17	5.5	109.0	10.3	4.8
SSH20	128 mm carrier strip	20	5.5	128.0	10.3	4.8

Diagrams



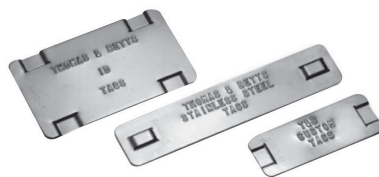
Carrier strip for single-character markers or ready-marked multi-character marking.



Single-character markers.

* = characters

NOTE: SSH6 to SSH20 not stamped with text can be used as carrier strips for single-character markers. The carrier strips can also be pre-stamped and combined with single-character markers. Customized markers are mounted on tape.



Identify your cable bundles with permanent, type 304 stainless steel imprinted tags applied with stainless steel cable ties

- After imprinting tags, simply slip a tie thru slots in the tag and fasten with a cable tie installation tool
- Tie down with ¼ in. wide ties
- Type 304 stainless steel

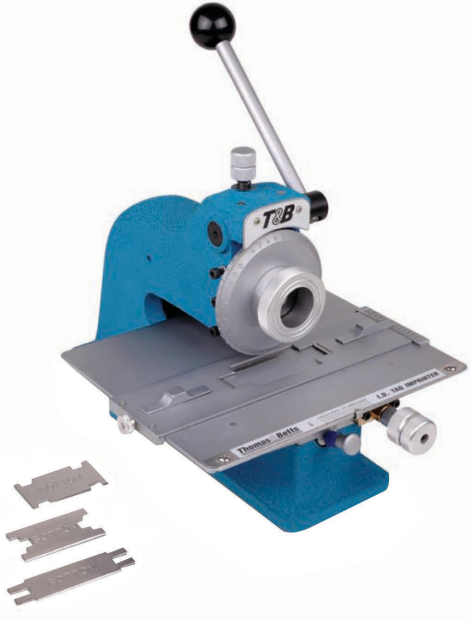
Cat. no.	Width		Length	
	In.	mm	In.	mm
SSID100	0.75	19.05	2.0	51
SSID101	1.50	38.10	2.5	63
SSID102	0.75	19.05	3.5	89

Packaging quantity: 100/box 0.015 in. (0.254 mm) thickness.

Note: Customized pre-embossed tags are available. Please consult regional sales office for details. Add suffix (316) for 316 stainless steel.

ID tagging system

Imprints ABB stainless steel ID tags



ID tag imprinter

- Includes special tag holder that provides quick, accurate positioning of tag
- Comes with a $\frac{3}{32}$ in. character imprinting wheel

Cat. no.	Description
WTID290	$\frac{3}{32}$ in. character imprinting wheel
WTID281	$\frac{1}{8}$ in. character imprinting wheel
WTID283	$\frac{3}{16}$ in. character imprinting wheel