
PRO-Snap Series

Robust design and easy-to-use, the PRO-Snap wire connectors ensure fast and reliable connections for a multitude of applications. PRO-Snap series is comprised of 4 type of wire connectors: Push-in wire connectors, classic lever connectors, compact lever connectors and in-line lever splicing connectors.

General features:

- Easy, fast & reliable wire connections
- Compact design for tight spaces
- Transparent housing for easy wire connection verification
- Wide wire range compatibility
- Easy diagnosis via continuity check slot
- For use in residential, commercial, OEM, lighting retrofit and pre-fab wiring systems



PRO-Snap Series

Ordering information

Push-in wire connectors



- Push-in design for fast connection of wires
- Available in 2, 3, 4, 5, 6 and 8 ports
- Color coded for easy size identification
- Made of a durable polycarbonate et polyamide assembly which offers a UL 94V-2 flame rating and resistant to temperatures up to 105 °C (221 °F)
- Wide range of admissible wire sizes, #24-#12 solid and stranded wires
*Note that stranded wires must to tinned to help with insertion of conductor
- Approved for circuits up to 600V and lighting fixtures and signs up to 1000V
- For copper conductor only

Model	Colour	AWG wire range										
		28	26	24	22	20	18	16	14	12	10	
Push-in wire connectors	Grey									#24-#12 sol/str tinned		

Packaging options

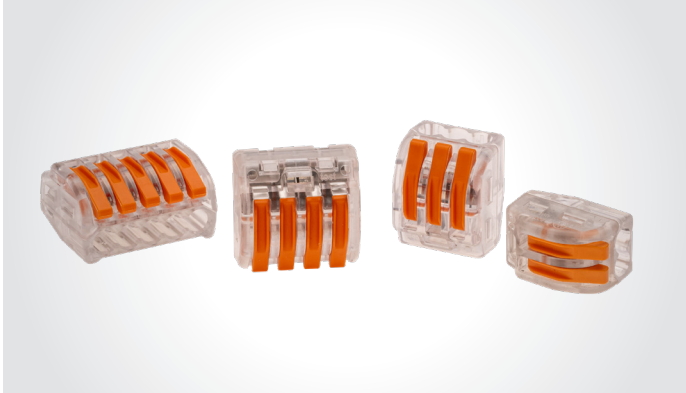


Cat. no.	Packaging format	Quantity per package	Std. pkg. (min./mult.)
PIC2M10	Clamshell	10	100 units
PIC2P	Propak	100	1,000 units
PIC2BP250	Box	250	2,500 units
PIC2BP1000	Box	1,000	6,000 units
PIC3M10	Clamshell	10	100 units
PIC3P	Propak	100	1,000 units
PIC3BP250	Box	250	2,500 units
PIC3BP1000	Box	1,000	6,000 units
PIC4M10	Clamshell	10	100 units
PIC4P	Propak	100	1,000 units
PIC4BP200	Box	200	2,000 units
PIC4BP1000	Box	1,000	6,000 units
PIC5M10	Clamshell	10	100 units
PIC5P	Propak	100	1,000 units
PIC5BP250	Box	200	1,600 units
PIC6M5	Clamshell	5	50 units
PIC6P	Propak	50	500 units
PIC6BP100	Box	100	1,000 units
PIC8M5	Clamshell	5	50 units
PIC8P	Propak	50	500 units
PIC8BP100	Box	100	1,000 units

PRO-Snap Series

Ordering information

Classic lever wire connectors



- Lever mechanism for easy insertion and release of wires while offering a sturdy connection
- Available in 2, 3, 4 and 5 ports
- Heavy duty compact design
- Re-useable
- Made of a durable polycarbonate et polyamide assembly which offers a UL 94V-2 flame rating and resistant to temperatures up to 105 °C (221 °F)
- Wide range of admissible wire size, #28-#12 solid and stranded wires
- Approved for circuits up to 600V and lighting fixtures and signs up to 1000V
- For copper conductor only

Model	Colour	AWG wire range										
		28	26	24	22	20	18	16	14	12	10	
Classic lever wire connectors	Orange											#28-#12 sol/str

Packaging options

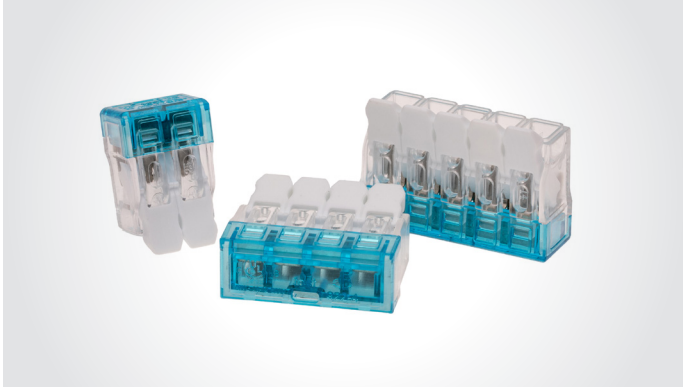


Cat. no.	Packaging format	Quantity per package	Std. pkg. (min./mult.)
CLTC2M10	Clamshell	10	100 units
CLTC2B50	Propak	50	500 units
CLTC2P	Propak	100	1,000 units
CLTC3M5	Clamshell	5	50 units
CLTC3B25	Propak	25	250 units
CLTC3P	Propak	100	1,000 units
CLTC4M5	Clamshell	5	50 units
CLTC4B25	Propak	25	250 units
CLTC4P	Propak	50	500 units
CLTC5M4	Clamshell	4	40 units
CLTC5B25	Propak	25	250 units
CLTC5P	Propak	50	500 units

PRO-Snap Series

Ordering information

Compact lever wire connectors



- Lever mechanism for easy insertion and release of wires while offering a sturdy connection
- Available in 2, 3, 4 and 5 ports
- Re-useable
- Made of a durable polycarbonate et polyamide assembly which offers a UL 94V-2 flame rating and resistant to temperatures up to 105 °C (221 °F)
- Wide range of admissible wire size, #28-#12 solid and stranded wires
- Approved for circuits up to 600V and lighting fixtures and signs up to 1000V
- For copper conductor only

Model	Colour	AWG wire range										
		28	26	24	22	20	18	16	14	12	10	
Compact lever wire connectors	Blue											#28-#12 sol/str

Packaging options



Cat. no.	Packaging format	Quantity per package	Std. pkg. (min./mult.)
LTC2M10	Clamshell	10	100 units
LTC2P	Propak	100	1,000 units
LTC2BP500	Box	500	3,000 units
LTC2BP1000	Box	1,000	6,000 units
LTC3M10	Clamshell	10	100 units
LTC3P	Propak	100	1,000 units
LTC3BP500	Box	500	3,000 units
LTC3BP1000	Box	1,000	6,000 units
LTC4M5	Clamshell	5	50 units
LTC4P	Propak	50	500 units
LTC4BP250	Box	250	1,500 units
LTC5M5	Clamshell	5	50 units
LTC5P	Propak	50	500 units
LTC5BP250	Box	250	1,500 units

PRO-Snap Series

Ordering information

Compact in-line lever wire connectors



- The best solution for easy in-line splicing connections
- Lever mechanism for easy insertion and release of wires while offering a sturdy connection
- Available in 2, 4 and 6 ports
- Re-useable
- Made of a durable polycarbonate et polyamide assembly which offers a UL 94V-2 flame rating and resistant to temperatures up to 90 °C (194 °F)
- Wide range of admissible wire size, #24-#12 for solid and #22 to #14 for stranded wires
- Approved for circuits up to 600V and lighting fixtures and signs up to 1000V
- For copper conductor only

Model	Colour	AWG wire range										
		28	26	24	22	20	18	16	14	12	10	
Compact in-line lever wire connectors	Blue									#24-#12 sld		
										#22-#14 str		

Packaging options



Cat. no.	Packaging format	Quantity per package	Std. pkg. (min./mult.)
LTLC2M8	Clamshell	8	80 units
LTLC2B40	Propak	40	400 units
LTLC2P	Propak	100	1,000 units
LTLC4M5	Clamshell	5	50 units
LTLC4B25	Propak	25	250 units
LTLC4P	Propak	100	800 units
LTLC6M4	Clamshell	4	40 units
LTLC6B15	Propak	15	150 units
LTLC6P	Propak	50	400 units